
TOYO GREEN CO.,LTD.

Corporate Profile as of April 1. 2018

Location

Access Bldg. 2-33-8, Nihonbashi-Ningyo-cho, Chuo-ku, Tokyo,
Postal Code 103-0013 TEL 81-(0)3-3249-7731 FAX 81-(0)3-3249-7781
URL <http://www.toyo-green.com/>

Our Founding

Toyo Green Co., Ltd. was founded on December 1, 1969.

Although with the merging of Toyo Maintenance Company Ltd. and Toyo Green Co., Ltd. on March 1, 2016, the establishment date (February 10, 1999) of the surviving company, Toyo Maintenance, became the registered establishment date, we keep December 1, 1969, the day Toyo Green was founded, as our founding date so that we do not forget the spirit of our Founder.

Our Activities

- (1) Sales of agricultural chemicals, fertilizers and other turf maintenance products such as soil amendments, dethatching products, penetrants/wetting agents, coloring/marketing materials, turf activating products/stress relievers/micronutrients turf/ground covers, relevant equipments/articles for golf courses, parks, green spaces, sport fields, etc..
- (2) Commissioned pest and weed control at golf courses, parks, green spaces, sports fields, etc.
- (3) Design, construction, management, and operation of facilities such as golf courses, parks, green spaces, sports fields, and indoor/outdoor sports facilities
- (4) Consulting services related to the construction, maintenance, and management of golf courses, parks, green spaces, sports fields, etc.
- (5) Sales of various types of turf and turf seeds
- (6) Sales of turf related machineries
- (7) Other related activities

Establishment

February 10, 1999

December 1, 1969 (Foundation date)

Paid-up Capital

38 million Japanese Yen

Number of employees

250

Annual Turnover (Past 3 years)

2015 3,890 million Japanese Yen*

2016 4,037 million Japanese Yen

2017 4,162 million Japanese Yen

(* 2015 : Consolidated net sales of Toyo Green and Toyo Maintenance)

Stockholders

Directors & employees 100%

Directors

President	Takao Yamada
Senior Managing Director	Hideo Katsuike
Director	Shoichi Kimura
Director	Masashi Sasakura
Outside Director	Kiyofumi Fujita
Outside Director	Satoshi Takihi
Auditor	Koichi Noda

Banking reference

Resona Bank,Ltd.

Japan Finance Corporation

Sumitomo Mitsui Banking Corporation

MUFG Bank, Ltd.

Our customers

Golf courses, various sport grounds, school campuses and other turf site owners throughout Japan

Turf maintenance product dealers

Turf maintenance companies

Main suppliers (in JAPAN)

Agri Doc Co. Ltd.
Arysta LifeScience Corporation
BASF Japan Ltd.
Bayer CropScience K.K.
Idemitsu Agri Co. Ltd.
Kuretake Co.,Ltd.
MC Ryokka Co., Ltd.
Nichino Ryokka Co., Ltd.
Nippon Kayaku Co., Ltd.
Panasonic Environmental Systems
& Engineering Co., Ltd.
Rainbow Chemical Co., Ltd.
Shizuoka New Turf Co., Ltd.
Toyota Tsusho Corporation

Main suppliers (Overseas)

Campey Turf Care Systems (UK)
Covermaster, Inc (Canada)
DLF Pickseed USA Inc. (USA)
Fleet (Line Markers) Ltd (UK)
Graden Industries (Australia)
Growth Products, Ltd. (USA)
Jacklin Seed (USA)
Maredo BV (The Netherlands)
Mountain View Seeds (USA)
PBI Gordon Corporation (USA)
Pennington Seeds, Inc. (USA)
Profile Products LLC (USA)
T.I.P. Inc. (USA)
The Andersons, Inc. (USA)
Turftech International Limited (UK)
Underhill International Corporation

Licenses

Special Construction Business License No.20238, Landscape works, Earthworks, Engineering work
Registration of Pesticide Sales
Registration of Poisonous and Deleterious Substances (General)
Registration of Fertilizer Sales

Number of license holders

Construction Management Engineer	22
Landscape Management Engineer	31
Turfgrass Management Engineer	47
Senior Sports Facility Manager	2
Professional Engineer (Agronomy)	1
Ph.D. (Agronomy)	2
Hazardous Materials Officer	33
Poisonous and Deleterious Substances Officer	39

ISO Certification

ISO 14001:2004, JIS Q 14001:2004

Head Office, Tokyo, Nagoya & Osaka Branches, Chiba, Tsuchiura & Okinawa Offices



Membership (International)

ITS (International Turfgrass Society)

TPI (Turfgrass Producers International)

GCSAA (Golf Course Superintendent Association of America) A member (USA)

STMA (Sports Turf Managers Association)(USA)

STRI (Sports Turf Research Institute)(UK)

Membership (Domestic)

JSTS (Japanese Society of Turfgrass Science)

JGIA (Japan Golf Industry Association)

PSJ (Phytopathology Society of Japan)

JSSSPN (Japan Society of Soil Science and Plant Nutrition)

JPPA (Japan Plant Protection Association)

JAPR (Japan Association of Phyto-Regulators)

GSPA (Green and Safety Promoters Association)

RSGCPCT (Research Society for Golf Course Pest Control Technique)

JSGCA (Japanese Society of Golf Course Architects)

OLUGI (Organization of Landscape and Urban Green Infrastructure

(Collaborative study group; Groundcover and Gardening Division)

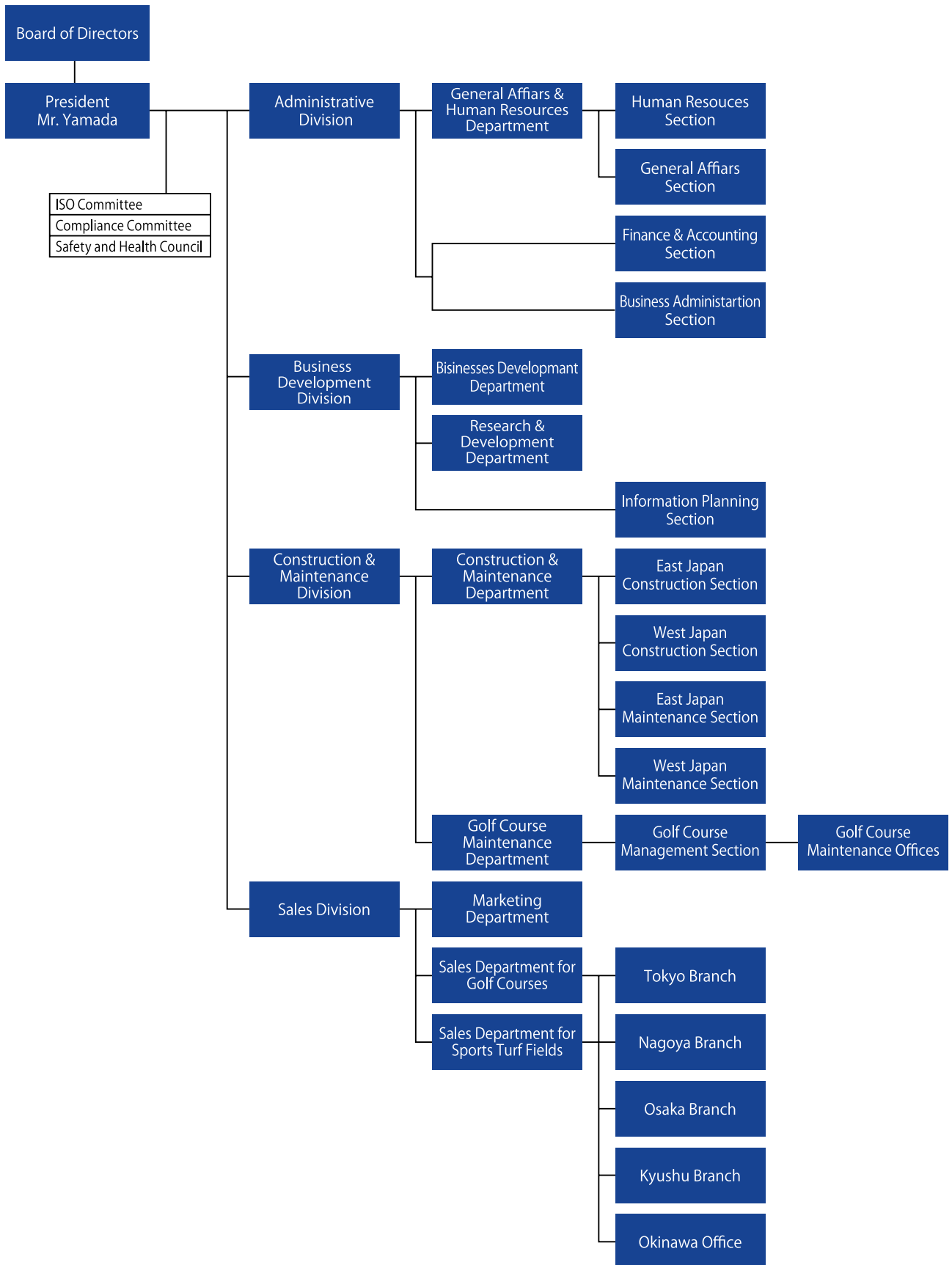
Higashi-Nihon Green Research Institute

Kansai Golf Union - Green Section Research Center

NGRI (Nishinohon Green Research Institute)

Hokkaido Green Research Society

Our Organization as of March 31,2018



Offices and Branches

Head Office

Access Bldg. 2-33-8, Nihonbashi-Ningyo-cho, Chuo-ku, Tokyo,
Postal Code 103-0013 TEL 81-(0)3-3249-7731 FAX 81-(0)3-3249-7781

Tokyo Branch Office

Chuo-ku, Tokyo

Osaka Branch Office

Nishinomiya city, Hyogo

Nagoya Branch Office

Nishi-ku, Nagoya city, Aichi

Kyushu Branch Office

Kurume city, Fukuoka

Tsuchiura Office

Tsuchiura city, Ibaraki

Chiba Office

Chiba city, Chiba

Okinawa Office

Shimajiri-gun, Okinawa

Kashiwa Research & Development Center

5-3-2 Kita-Kashiwa, Kashiwa city, Chiba
Postal Code 277-0832 TEL 81-(0)4-7105-4893 FAX 81-(0)4-7105-4895

Our Current Turf Management Activities (2018 Apr)

Intergrated Turf Management services for Golf Courses

North Shore Country Club (Ibaraki)	Fuji Green Hill Golf Course (Shizuoka)
Sakura Golf Club (Ibaraki)	Nabari Country Club (Mie)
Aso Country Club (Ibaraki)	Meishin Ritto Country Club (Shiga)
Glissando Golf Club (Chiba)	Kosugi Country Club (Toyama)
Tama Country Club (Tokyo)	Shin Osaka Golf Club (Osaka)
Wakasu Golf Links (Tokyo)	Kamo Country Club (Horoshima)
Hayama International Golf Club (Kanagawa)	Hiroshima Country Club Hachihonmatsu Course (Hiroshima)
Fuji Health Country Club (Shizuoka)	Imabari Country Club (Ehime)

Stadiums and Sports Fields Management

Chichibunomiya National Rugby Field (Tokyo)
Tatsunoko Field and Tatsunoko Stadium (Ibaraki)
Fukuda-Denshi Arena (Chiba)
Anesaki Soccer Field (Chiba)
Waseda University Kamiigusa Ground (Tokyo)
Waseda University Sugadaira Ground (Nagano)
Mizuho Athletic Field (Aichi)
Nagoya Minato Soccer Field (Aichi)
Toyota City Stadium (Aichi)
Toyota Sports Center (Aichi)
Wave Stadium Kariya (Aichi)
Okazaki City Ball Park (Aichi)
Toyohashi city lwata sports park baseball field and ball game field (Aichi)
Kasamatsu Town Sports Field (Gifu)
Panasonic Stadium Suita (Osaka)
Gamba Osaka training field (Osaka)
Taishi Town Athletic Field (Hyogo)
Kushimoto Town Sports Field (Wakayama)
Masada Soccer Field (Okayama)
Edion Stadium Hiroshima (Hiroshima)
Horoshima sogo ground (Hiroshima)
Nigineer stadium (Ehime)
V-Varen 18 Bank Field (Nagasaki)
Isahaya city soccer field (Nagasaki)
Kagoshima Soccer and Rugby Field (Kagoshima)
Okinawa Comprehensive Athletic Park Sports Field (Okinawa)
Nanjo City Sports Field (Okinawa)
Ginowan Municipal Baseball Field (Okinawa)
Itoman city Nishizaki sports park athretic field (Okinawa)
Itoman city Nishizaki sports park baseball field (Okinawa)
Kochinda Sports Field Soccer Field (Okinawa)
Koganenomori Park Athletic Field and Baseball Field(Okinawa)
Gosamaru Athletic Field in Yoshinoura Park (Okinawa)

Turfgrass School Yard (Construction and Turfgrass Management)

Elementary Schools, Junior High Schools, Kindergartens, Preschools,
Schools for Handicapped Children, Private Schools

Consultation and Survey services for

Golf courses, stadiums, athletic fields and schools

Brief Corporate History

Toyo Green Co., Ltd.	1969-1999
1969	Toyo Green Co., Ltd. founded (paid-up capital: 10 million yen)
1971	Published "Ryokuchi To Kanri "(Green Spaces and Management)
1978	Started domestic production of Trimec F, Construction of the first TG Purr-Wick putting green in Japan
1984	Engineering Department launched
1986	Obtained patent for the TG Purr-Wick for green construction
1989	Established Japan Turfgrass Co. Ltd. through joint investment
1990	Started turf management on the Kasumigaoka National Stadium
1991	Held 1st Toyo Green Turf Seminar
1993	J.League launched
1994	Established J2 Inc.
1995	Started turf management on the Nagoya Grampus Eight practicing field at Toyota Sports Center
1999	Established Toyo Maintenance Company Ltd. (paid-up capital: 10 million yen) as a wholly owned subsidiary of Toyo Green Co.,Ltd. Head office:Hitachinaka-shi

Toyo Green Co., Ltd.	1999-2015	Toyo Maintenance Co., Ltd.	1999-2015
2005	Started turf management operations at Fukuda Denshi Arena	1999	Toyo Maintenance Co., Ltd. was established as a wholly owned subsidiary of Toyo Green Co.,Ltd.
2007	Import of turf related products operations transferred from Arysta LifeScience	2002	Management and construction at some venue of soccer World Cup held in Korea/Japan
2008	Started sales of Nutri DG series of fertilizers	2003	Transferred head office to Chuo-ku, Tokyo
2011	Established Kashiwa Research & Development Center Announced the TG fungicide program	2006	Obtained ISO14001 certification
2014	Business tie-up with Sports Turf Research Institute (UK)	2011	Started handling of PC Drainage Decontamination work of the radioactive contamination on turf by the Fukushima nuclear power station with Landscape Architecture-Based Lawn Decontamination and Renewal Method
2015	Acquired all shares of the company held by Arysta LifeScience Corporation	2012	Commissioned training of Okinawan turf experts "Shibanchu"
		2015	Construction completed and pitch management started at Suita City Football Stadium Started management of Okinawa Comprehensive Athletic Park

Toyo Green Co., Ltd.	2016(Mar.)-
2016	Toyo Maintenance merged with Toyo Green The company name changed to Toyo Green Co., Ltd. Established Shizuoka New Turf Co.,Ltd.
2017	Held the 22st Toyo Green Turf Seminar Relocated Chiba office and Okinawa office

TOYO GREEN TURF SEMINAR

We hold special seminar "Toyo Green Turf Seminar" for turf professionals, almost every year since 1991, inviting well-known lecturers, and are proud of being able to offer good opportunities to exchange up-to-date information on the turf management .

The lecturers we have invited to our seminars include:

Dr. B.Guertal, Auburn Univ. (2017)
Dr. B. Huang, Rutgers Univ. (2002, 2016)
Dr. L.B. McCarty, Clemson Univ. (2008, 2015)
Dr. D. Bremer, Kansas State Univ. (2015)
Dr. S. Bruce Martin, Jr. Clemson Univ. (2014)
Mr. A. Cole, STRI. (2014)
Dr. R. Latin, Purdue Univ. (2013)
Mr. T. Buchen, CGCS, MG (2013)
Dr. C.A. Bigelow, Purdue Univ. (2011)
Dr. E. McCoy, Ohio State Univ. (2011)
Mr. S.J. Zontek, USGA Green Section (2006)
Dr. J. Fry, Kansas State Univ. (2006)
Dr. D.C. Bowman, NC State Univ. (1995, 2005)
Mr. C. Hartwiger, USGA Green Section (2005)
Dr. L.P. Tredway, NC State Univ. (2005)
Mr. J.F. Moore, USGA Green Section (2004)
Mr. S. Bernhard, Bernhard and Company (2003)
Dr. D. Brede, Jacklin Seed (2003)
Mr. K. Mangum, Atlanta Athletic Club (1997, 2002)
Dr. S.T. Dara, Analytical Technology Transfer (2001)
Dr. R.H. Hurley, Lofts Seed (1992, 1998, 2001)
Dr. F. Yelverton, NC State Univ. (1999)
Dr. G. Landry, Georgia Univ. (1999)
Dr. L.T. Lucas, NC State Univ. (1994, 1998)
Dr. R.J. Cooper, NC State Univ. (1997)
Dr. B.B. Clarke, Rutgers Univ. (1997)
Dr. M.C. Engelke, Texas A&M Univ. (1992, 1996)
Dr. K.J. Karnok, Georgia Univ. (1996)
Dr. C.H. Peacock, NC State Univ. (1996)
Dr. J.A. Murphy, Rutgers Univ. (1995)
Dr. R.E. Schmidt, Virginia Tech. (1994)
Dr. N.E. Christians, Iowa State Univ. (1994)
Mr. D. Wada, Miyoshi Co., Ltd. (1993)
Dr. V.G. Lehman, Lofts Seed. (1993)
Dr. J.M. Dipaola, NC State Univ. (1992, 1993)
Dr. A. Harivandi, Univ. of California (1993)
Mr. T. Imada, Japan Turfgrass Co., Ltd. (1992)
Dr. J.C. Adams, Agri Diagnostic (1991)
Dr. W.H. Daniel, Purdue Univ. (1991)

and lecturers also include our Research & Development section staffs.