



Toyo Green CO.,LTD.

# **Corporate Profile**

## 2022

as of April 1. 2022

**Location**

Access Bldg. 2-33-8, Nihonbashi-Ningyo-cho, Chuo-ku, Tokyo,  
Postal Code 103-0013 TEL 81-(0)3-3249-7731 FAX 81-(0)3-3249-7781  
URL <https://www.toyo-green.com/>

**Our Founding**

Toyo Green Co., Ltd. was founded on December 1, 1969.  
Although with the merging of Toyo Maintenance Company Ltd. and Toyo Green Co., Ltd. on March 1, 2016, the establishment date (February 10, 1999) of the surviving company, Toyo Maintenance, became the registered establishment date, we keep December 1, 1969, the day Toyo Green was founded, as our founding date so that we do not forget the spirit of our Founder.

**Our Activities**

- (1) Sales of agricultural chemicals, fertilizers and other turf maintenance products such as soil amendments, dethatching products, penetrants/wetting agents, coloring/marketing materials, turf activating products/stress relievers/micronutrients turf/ground covers, relevant equipments/articles for golf courses, parks, green spaces, sport fields, baseball parks, etc..
- (2) Commissioned pest and weed control at golf courses, parks, green spaces, sports fields, etc.
- (3) Design, construction, management, and operation of facilities such as golf courses, parks, green spaces, sports fields, baseball parks, and indoor/outdoor sports facilities
- (4) Consulting services related to the construction, maintenance, and management of golf courses, parks, green spaces, sports fields, baseball parks, etc.
- (5) Design, construction and renovation of water supply and drainage facilities for golf courses, parks, green spaces, grounds, indoor and outdoor sports facilities, etc.
- (6) Sales of various types of turf and turf seeds
- (7) Sales of turf related machineries
- (8) Other related activities

<b>Establishment</b>	December 1, 1969	
<b>Paid-up Capital</b>	38 million Japanese Yen	
<b>Number of employees</b>	247	
<b>Annual Turnover (Past 3 years)</b>	2019	4,581 million Japanese Yen
	2020	3,838 million Japanese Yen
	2021	3,841 million Japanese Yen
<b>Stockholders</b>	Directors & employees	100%
<b>Directors</b>	President	Masashi Sasakura
	Director	Shoichi Kimura
	Outside Director	Youhei Ishihara
	auditor	Satoshi Takihi
<b>Banking reference</b>	Resona Bank,Ltd. Japan Finance Corporation Sumitomo Mitsui Banking Corporation MUFG Bank, Ltd.	
<b>Our customers</b>	Golf courses, various sport grounds, ballparks, school campuses and other turf site owners throughout Japan Turf maintenance product dealers Turf maintenance companies	

**Main suppliers  
(in JAPAN)**

Ac-Planta Inc.  
 Agri Doc Co. Ltd.  
 BASF Japan Ltd.  
 Bayer CropScience K.K.  
 Hodogaya UPL Co., Ltd.  
 Idemitsu Agri Co., Ltd.  
 Kuretake Co.,Ltd.  
 MC Ryokka Co., Ltd.  
 Maruyoshi Sangyo Co., Ltd.  
 Nichino Ryokka Co., Ltd.  
 Nippon Kayaku Co., Ltd.  
 Panasonic Environmental Systems & Engineering Co., Ltd.  
 Rainbow Chemical Co., Ltd.  
 RAKUTOP LTD.  
 Shizuoka New Turf Co., Ltd.  
 SDS Biotech K.K.  
 Tateno Corporation

**Main suppliers  
(Overseas)**

Barenbrug USA (USA)  
 Campey Turf Care Systems (UK)  
 Covermaster, Inc (Canada)  
 Douglas Plant Health (USA)  
 Fleet (Line Markers) Ltd (UK)  
 Turf Engineering/Graden (AUS)  
 Maredo BV (The Netherlands)  
 Mountain View Seeds (USA)  
 PBI Gordon Corporation (USA)  
 Pennington Seeds, Inc. (USA)  
 Profile Products LLC (USA)  
 RhizoSolutions LLC (USA)  
 Seed Research of Oregon (USA)  
 T.I.P. Inc. (USA)  
 The Andersons, Inc. (USA)  
 Turftech International Limited (UK)  
 Underhill International Corporation (USA)

**Licenses**

Special Construction Business License No.20238, Landscape works, Earthworks,  
 Engineering work  
 Registration of Pesticide Sales  
 Registration of Poisonous and Deleterious Substances (General)  
 Registration of Fertilizer Sales

**Number of  
license holders**

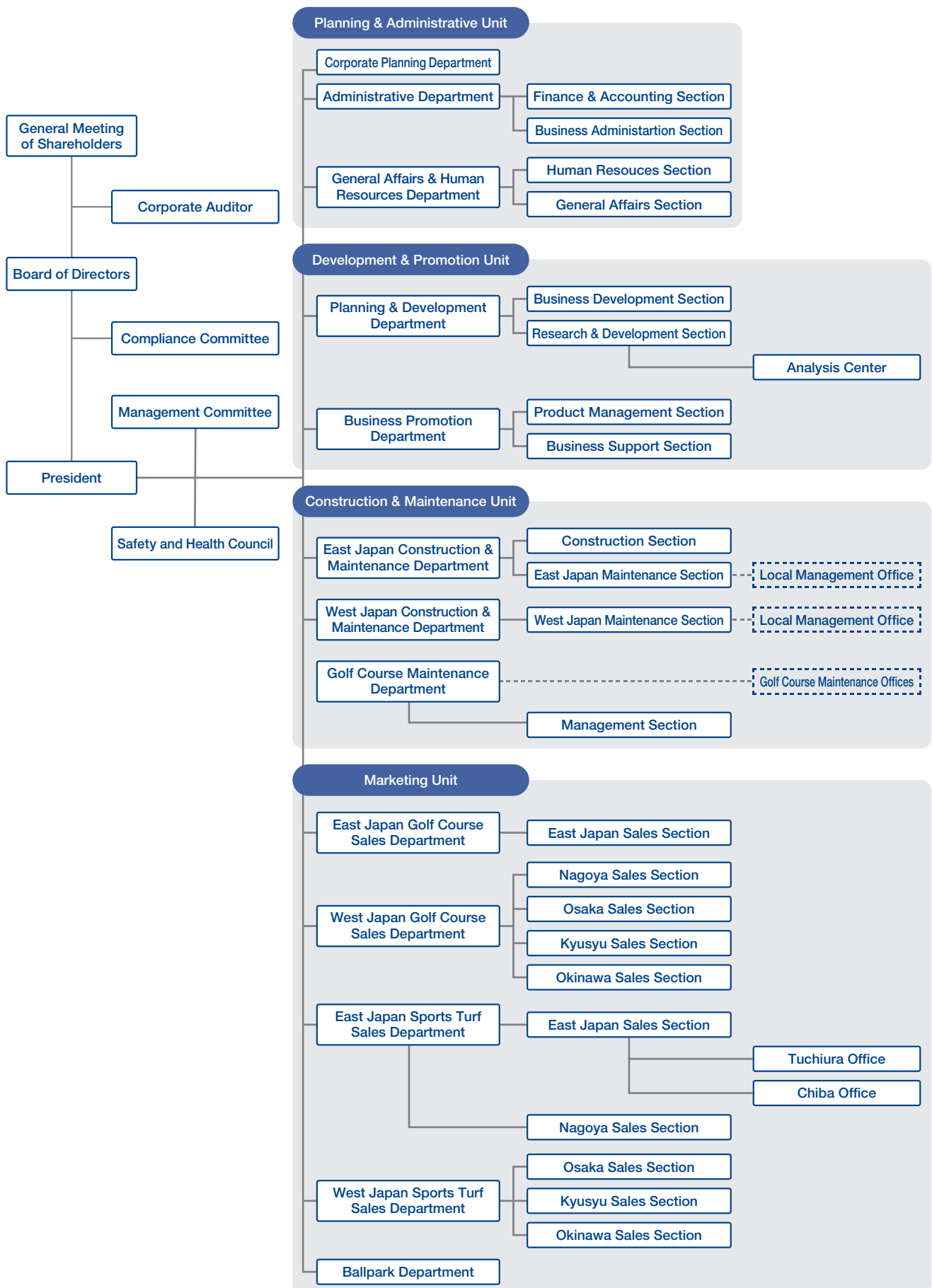
Construction Management Engineer	17
Landscape Management Engineer	31
Turfgrass Management Engineer	54
Senior Sports Facility Manager	2
Professional Engineer (Agronomy)	1
Ph.D. (Agronomy)	2
Hazardous Materials Officer	34
Poisonous and Deleterious Substances Officer	25
Advisors for proper use of pesticide	20
Controllers for safe use of pesticide for green	2

**Membership  
(International)**

GCSAA	(Golf Course Superintendent Association of America) A member (USA)
ITS	(International Turfgrass Society)
TPI	(Turfgrass Producers International)
STMA	(Sports Turf Managers Association) (USA)
STRI	(Sports Turf Research Institute) (UK)

**Membership  
(Domestic)**

JSTS	(Japanese Society of Turfgrass Science)
JGIA	(Japan Golf Industry Association)
PSJ	(Phytopathology Society of Japan)
JPPA	(Japan Plant Protection Association)
JAPR	(Japan Association of Phyto-Regulators)
Japan Society Baseball Science	
GSPA	(Green and Safety Promoters Association)
RSGCPCT	(Research Society for Golf Course Pest Control Technique)
JSGCA	(Japanese Society of Golf Course Architects)
OLUGI	(Organization of Landscape and Urban Green Infrastructure)
	(Collaborative study group; Groundcover and Gardening Division)
Higashi-Nihon Green Research Institute	
Kansai Golf Union - Green Section Research Center	
NGRI	(Nishinohon Green Research Institute)
Hokkaido Green Research Society	





#### Head Office

Access Bldg. 2-33-8, Nihonbashi-Ningyo-cho, Chuo-ku, Tokyo,  
Postal Code 103-0013 TEL 81-(0) 3-3249-7731 FAX 81-(0) 3-3249-7781

#### Tokyo Branch Office

Chuo-ku, Tokyo

#### Nagoya Branch Office

Nishi-ku, Nagoya city, Aichi

#### Osaka Branch Office

Nishinomiya city, Hyogo

#### Kyushu Branch Office

Kurume city, Fukuoka

#### Okinawa Office

Shimajiri-gun, Okinawa

#### Tsuchiura Office

Tsuchiura city, Ibaraki

#### Chiba Office

Chiba city, Chiba

#### Kashiwa Research & Development Center

5-3-2 Kita-Kashiwa, Kashiwa city, Chiba  
Postal Code 277-0832 TEL 81-(0) 4-7105-4893 FAX 81-(0) 4-7105-4895

### Intergrated Turf Management services for Golf Courses

- North Shore Country Club (Ibaraki)
- Sakura Golf Club (Ibaraki)
- Glissando Golf Club (Chiba)
- Tama Country Club (Tokyo)
- Wakasu Golf Links (Tokyo)
- Hayama International Country Club (Kanagawa)
- Fuji Health Country Club (Shizuoka)
- Fuji Green Hill Golf Course (Shizuoka)
- Nabari Country Club (Mie)
- Meishin Ritto Country Club (Shiga)
- Shin Osaka Golf Club (Osaka)

### Stadiums and Sports Fields Management

- Tatsunoko Field and Tatsunoko Stadium (Ibaraki)
- Anesaki Soccer Field (Chiba)
- Waseda University Kamiigusa Ground (Tokyo)
- Waseda University Sugadaira Ground (Nagano)
- Nagoya Minato Soccer Field (Aichi)
- Wave Stadium Kariya (Aichi)
- Toyota Sports Center (Aichi)
- Toyota City Stadium (Aichi)
- Morikoro Park multipurpose ball game field (Aichi)
- Paloma Mizuho Sports Park (Aichi)
- Okazaki Red Diamond Stadium (Aichi)
- Toyohashi City Iwata Sports Park (Aichi)
- Kasamatsu Town Sports Field (Gifu)
- Sanga Stadium by KYOCERA
- Panasonic Stadium Suita (Osaka)
- Gamba Osaka training field (Osaka)
- Kushimoto Town Sports Field (Wakayama)
- Masada Soccer Field (Okayama)
- Edion Stadium Hiroshima (Hiroshima)
- Miyoshi Sports Park (Hiroshima)
- Higashi Hiroshima Sports Park (Hiroshima)
- Kizuna Stadium (Yamaguti)
- Ningineer Stadium (Ehime)
- Ozu Tawn Sports Park (Kumamoto)
- Kagoshima Soccer and Rugby Field (Kagoshima)
- Aira Football Center (Kagoshima)
- Tapic Kenso Hiyagon Stadium (Okinawa)
- Nanjo City Sports Field (Okinawa)
- ANA Ballpark Urasoe (Okinawa)
- Itoman city Nishizaki Athletic Field (Okinawa)
- Itoman city Nishizaki Baseball Field (Okinawa)
- Kochinda Sports Field Soccer Field (Okinawa)
- Koganenomori Park Athletic Field and Baseball Field (Okinawa)
- Gosamaru Athletic Field in Yoshinoura Park
- Akama Sports Park Baseball Field and Ball Field (Okinawa)
- Tomigusuku General Park Athletics Stadium (Okinawa)

### Turfgrass School Yard (Construction and Turfgrass Management)

Elementary Schools, Junior High Schools, Kindergartens, Preschools,  
Schools for Handicapped Children, Private Schools

### Consultation and Survey services for

Golf courses, stadiums, athletic fields, ballparks and schools



**Toyo Green Co., Ltd.**

1969-1999

- 1969 Toyo Green Co., Ltd. founded (paid-up capital: 10 million yen)
- 1971 Published "Ryokuchi To Kanri" (Green Spaces and Management)
- 1978 Started domestic production of Trimec F,  
Construction of the first TG Purr-Wick putting green in Japan
- 1984 Engineering Department launched
- 1986 Obtained patent for the TG Purr-Wick for green construction
- 1989 Established Japan Turfgrass Co. Ltd. through joint investment
- 1990 Started turf management on the Kasumigaoka National Stadium
- 1991 Held 1st Toyo Green Turf Seminar
- 1993 J.League launched
- 1994 Established J2 Inc.
- 1995 Started turf management on the Nagoya Grampus Eight practicing field at Toyota Sports Center
- 1999 Established Toyo Maintenance Company Ltd. (paid-up capital: 10 million yen) as a wholly owned

**Toyo Green Co., Ltd.**

1999-2015

- subsidiary of Toyo Green Co.,Ltd. Head  
office:Hitachinaka-shi
- 2005 Started turf management operations at Fukuda  
Denshi Arena
- 2007 Import of turf related products operations  
transferred from Arysta LifeScience
- 2008 Started sales of Nutri DG series of fertilizers
- 2011 Established Kashiwa Research & Development  
Center  
Announced the TG fungicide program
- 2014 Business tie-up with Sports Turf Research Institute

**Toyo Maintenance Co., Ltd.**

1999-2015

- (UK)
- 2015 Acquired all shares of the company held by Arysta  
LifeScience Corporation
- 1999 Toyo Maintenance Co., Ltd. was established as a  
wholly owned subsidiary of Toyo Green Co.,Ltd.
- 2002 Management and construction at some venue of  
soccer World Cup held in Korea/Japan
- 2003 Transferred head office to Chuo-ku, Tokyo
- 2011 Started handling of PC Drainage  
Decontamination work of the radioactive  
contamination on turf by the Fukushima nuclear  
power station with Landscape Architecture-Based  
Lawn Decontamination and Renewal Method
- 2012 Commissioned training of Okinawan turf experts  
"Shibanchu"

**Toyo Green Co., Ltd.**

2016 (Mar.) -

- 2015 Construction completed and pitch management  
Started management of Okinawa Comprehensive  
Athletic Park
- 2016 Toyo Maintenance merged with Toyo Green  
The company name changed to Toyo Green Co., Ltd.  
Established Shizuoka New Turf Co.,Ltd.
- 2017 Relocated Chiba office and Okinawa office
- 2018 Set up a ballpark business section  
"Hero" hybrid grass pitch construction completed at Nissan Stadium
- 2019 Held the 23rd Toyo Green Turf Seminar  
Construction of hybrid grass at Yokohama International Athletics Stadium. Conducted a ground survey and check  
of World Rugby.  
50th Founding Anniversary (1st Dec.)
- 2020 Set up Corporate Planning Department

We hold special seminar "Toyo Green Turf Seminar" for turf professionals, almost every year since 1991, inviting well-known lecturers, and are proud of being able to offer good opportunities to exchange up-to-date information on the turf management .

The lecturers we have invited to our seminars include:

Mr. B. Farren, Pinehurst Resort (2019)	Mr. K. Mangum, Atlanta Athletic Club (1997, 2002)
Dr. S. Kimura, Toyo Green (2019)	Dr. S.T. Dara, Analytical Technology Transfer (2001)
Dr. T. Cho, Toyo Green (2019)	Dr. R.H. Hurley, Lofts Seed (1992, 1998, 2001)
Dr. B.Guertal, Auburn Univ. (2017)	Dr. F. Yelverton, NC State Univ. (1999)
Dr. B. Huang, Rutgers Univ. (2002, 2016)	Dr. G. Landry, Georgia Univ. (1999)
Dr. L.B. McCarty, Clemson Univ. (2008, 2015)	Dr. L.T. Lucas, NC State Univ. (1994, 1998)
Dr. D. Bremer, Kansas State Univ. (2015)	Dr. R.J. Cooper, NC State Univ. (1997)
Dr. S. Bruce Martin, Jr. Clemson Univ. (2014)	Dr. B.B. Clarke, Rutgers Univ. (1997)
Mr. A. Cole, STRI (2014)	Dr. M.C. Engelke, Texas A&M Univ. (1992, 1996)
Dr. R. Latin, Purdue Univ. (2013)	Dr. K.J. Karnok, Georgia Univ. (1996)
Mr. T. Buchen, CGCS, MG (2013)	Dr. C.H. Peacock, NC State Univ. (1996)
Dr. C.A. Bigelow, Purdue Univ. (2011)	Dr. J.A. Murphy, Rutgers Univ. (1995)
Dr. E. McCoy, Ohio State Univ. (2011)	Dr. R.E. Schmidt, Virginia Tech. (1994)
Mr. S.J. Zontek, USGA Green Section (2006)	Dr. N.E. Christians, Iowa State Univ. (1994)
Dr. J. Fry, Kansas State Univ. (2006)	Mr. D. Wada, Miyoshi Co., Ltd. (1993)
Dr. D.C. Bowman, NC State Univ. (1995, 2005)	Dr. V.G. Lehman, Lofts Seed. (1993)
Mr. C. Hartwiger, USGA Green Section (2005)	Dr. J.M. Dipaola, NC State Univ. (1992, 1993)
Dr. L.P. Tredway, NC State Univ. (2005)	Dr. A. Harivandi, Univ. of California (1993)
Mr. J.F. Moore, USGA Green Section (2004)	Mr. T. Imada, Japan Turfgrass Co., Ltd. (1992)
Mr. S. Bernhard, Bernhard and Company (2003)	Dr. J.C. Adams, Agri Diagnostic (1991)
Dr. D. Brede, Jacklin Seed (2003)	Dr. W.H. Daniel, Purdue Univ. (1991)

and lecturers also include our Research & Development staffs.

The 24th Turf Seminar (2020) was postponed due to the spread of the novel corona virus (COVID-19)